

AMAZING DIY OUTDOOR KITCHENS with the DIY Outdoor Kitchen System!



OUR FRAMING SYSTEM IS #1



GRILLS



Side Burners



Doors



Drawers



Griddles



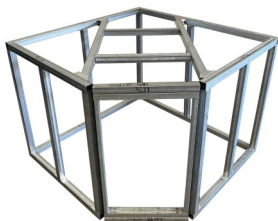
Ice Bins



Sinks



Refrigeration



Module Frame Kits



Cutout Kits



Building Supplies



Stucco

800-776-9803

www.DIYOutdoorKitchen.com

OPEN Monday—Friday 8am—7pm PST Sat & Sun Closed
16 Technology Dr., Suite 122, Irvine CA 92618 Closed to the Public

Over 50,000 Families have used our DIY framing System



Our System uses real steel square tubes and steel couplers.

BUILD HEAVY DUTY
STEEL FRAMES
WITHOUT WELDING

[LEARN MORE](#)



Little to No Cutting



Amazing Results



Custom Modules



Heavy Duty 18 Ga Steel



Easy 2 Screw



With the **DIY Outdoor Kitchen framing system** you can buy your grill and components from us or from another supplier.

Our kits work with all Outdoor Kitchen brands.

How is this possible?

Because we have created a system with **telescoping tubes to fit all sizes.**

We Offer A Great Selection of Gas Grills from Top Manufacturers



In Stock DIY Outdoor Kitchen Components

We Keep In Stock Our own line of premium quality 304 Grade Stainless Steel Components manufactured in the USA. We offer a choice of 2 different type of handles. The components do not display any logos so that you can match them with any brand grill. We also offer a full line of components by each of the grill manufacturers we sell. These you can find online in our E Store.

Choose Your Handle



With our DIY Outdoor Kitchen Premium Components Line No Extra Cost!



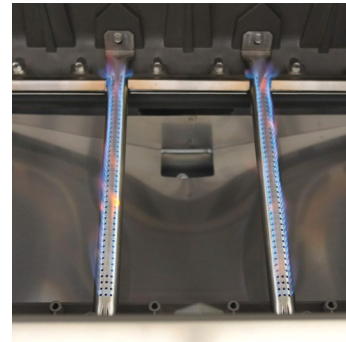
Standard

Round

IN STOCK GUARANTEE!!! SHIPS FAST!!!

Notice: All Final Prices are shown online and may differ from prices shown in the catalog.

Most Popular Napoleon Grills



Napoleon Prestige 500 Built-in Natural Gas Grill with Infrared Rear Burner and Rotisserie Kit

\$1499. + Free Shipping*

cutout: 30 3/4" W x 8 7/8" H x 20 5/8" deep

Model #: BIP500RBSS-3

- SafetyGlow Night Light illuminated controls.
- Four stainless steel burners deliver impressive heat and longevity.
- Rear infrared rotisserie burner and rotisserie kit allow you to slow roast food with restaurant-quality results.
- A Jetfire ignition system is designed to safely and reliably light the burners.
- Dual-Level stainless steel sear plates to vaporize drippings, control flare-ups, and keep food moist.



The Pro is the same size as the Prestige. It has a heavier lid and thicker cooking grates. It retains heat better than the Prestige. Both our great grills.

Napoleon Prestige Pro 500 Built-in Natural Gas Grill with Infrared burner and Rotisserie kit

\$1999. + Free Shipping*

Cutout: 30 3/4" W x 8 7/8" H x 20 5/8" Deep

Model number #BIPPRO500RBSS-3

- LED Spectrum Night Light control knobs with SafetyGlow.
- Four stainless steel burners deliver impressive heat and longevity.
- Rear infrared rotisserie burner and rotisserie kit allow you to slow roast food with restaurant-quality results.
- A Jetfire ignition system is designed to safely and reliably light the burners.
- Dual-Level stainless steel sear plates to vaporize drippings, control flare-ups, and keep food moist.



Napoleon Prestige PRO 665 Built-In Natural Gas Grill with Infrared Rear Burner and Rotisserie Kit **\$2999. + Free Shipping***

- Five stainless steel burners deliver impressive heat and longevity.
- The rear infrared rotisserie burner and rotisserie kit allow you to slow roast food with restaurant-quality results.
- Model #BIPRO665RBSS-3 cutout: 38" W x 20 5/8" D x 8 7/8" H

Most Popular Summerset Grills



- Easy-clean briquette system, which helps reduce flare-ups and ensures the grill has even heating across the grilling surface. Ceramic briquette trays feature a locking tray design, for easy cleaning. Simply flip over and turn the gas grill on high for 5 minutes to clean the briquettes.

Summerset Grills Sizzler 32-Inch 4-Burner Built-In Natural Gas Grill with Rear Infrared Burner **\$1815. + Free Shipping***

model #SIZ32-NG cutout: 30 5/8" x 8 1/2" H x 20 3/4" D

Also Available in a 5 burner 40" size.

\$2180. + Free Shipping



Sizzler Pro 32" **\$2240. + Free Shipping**

Model #SIZPRO32-NG Cutout: 30 5/8" W x 8 1/2" H x 20



Sizzler Pro 40" **\$2665. + Free Shipping**

Model #SIZPRO40-NG Cutout: 38" W x 20 3/4" D x 8 1/2" H



U Burners

- Four rust-resistant stainless steel u-tube burners provide 72,000 BTU's of high-heat performance, 18,000 BTU's per burner. Cutout: 38 1/2" W x 10" H x 20 3/4" D

Summerset Grills TRL 38-Inch 4-Burner Built-In Model#TRL38-NG

Natural Gas Grill with Rear Infrared Burner **\$3510 + Free Shipping***



**Blaze Premium LTE+ 32-Inch 4-Burner Built-In Natural Gas Grill w/ Lift-Assist Hood & Rear Infrared Burner—
\$2099.99 + Free Shipping***

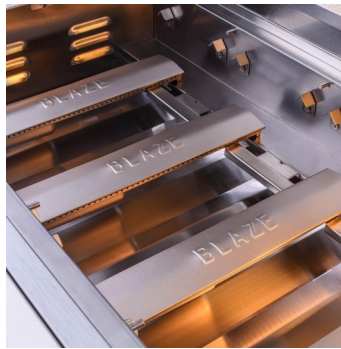
Model# BLZ-4LTE3-NG cutout: 30 5/8" W x 12 1/4" D x 8 1/2" H

Made of cast 304-grade stainless steel with no vulnerable weld spots, the Blaze Premium LTE+ natural gas grill is engineered for whatever challenges the elements (or your menu) can throw at it. The stainless steel grill hood is double lined, shielding the outer layer from heat discoloration while also keeping more heat where it matters most. This LTE+ model also includes a hood assist mechanism that makes opening and closing easier than ever in addition to new, improved lighting, which remains on while in use, and LED illuminated control system with safety glow lighting. All backed by Blaze's best-in-class, lifetime warranty.



**Blaze Premium LTE+ 40-Inch 5-Burner Built-In Natural Gas Grill w/ Lift-Assist Hood & Rear Infrared Burner -
\$2499.99 +Free Shipping***

Model #BLZ-5LTE3-NG cutout: 38 3/8" W x 21 1/4" D x 8 1/2" H



Blaze Premium LTE 30-Inch Built-In Natural Gas Griddle w/ Lights - \$1999.99 + Free Shipping

Model # BLZ-GRIDDLE-LTE-NG

Cutout: 28 1/8" w x 24 3/8" D x 12" H

Expand your outdoor cooking into new realms with the Blaze Premium LTE built-in gas griddle, featuring signature SRL LED control knob illumination exclusive to Blaze Premium LTE Series grills. The amazing versatility of the Blaze 1/2 Inch thick griddle allows you to cook up bacon and eggs, juicy hamburgers or sizzling fajitas with rice and veggies for the whole family. This Blaze built-in natural gas griddle is equipped with two commercial quality, 304 stainless steel U-shaped burners that each deliver 18,000 BTUs of cooking power for a total of 36,000 BTUs across the 495 square inch stainless steel cooking surface. Push and turn flame-thrower primary ignition, backup flash tube secondary ignition and cross tubes ensure a steady, reliable flame with every start. A large capacity grease tray with a hole in the center directs grease down to the drip tray below for easy cleaning. This gas griddle is constructed entirely with 304 grade stainless steel and includes a stainless steel lid to cover the griddle plate when not in use.



Fire Magic Echelon Diamond 18-Inch 36,000 BTU
 Built-In Natural Gas Pizza Oven **\$6749.10 + Free Shipping*** model# 5600

- 304 Stainless Steel construction
- Thermostatic control (150F - 750F)
- IPI Ignition with flame rectification
- Cordierite pizza stone
- Baking Rack

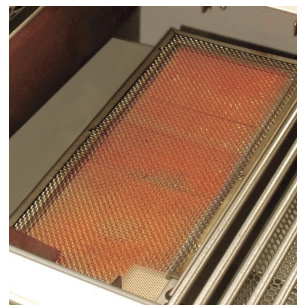
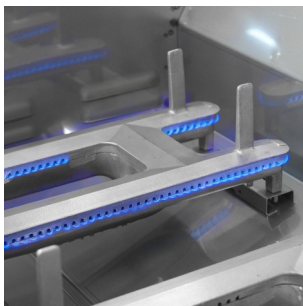
Cutout Dimensions: 31 1/4" Wide x 11 1/2" High x 23 1/2" Deep



Fire Magic Aurora A660I 30-Inch Built-In Natural Gas Grill With **One Infrared Burner, Rotisserie, And Analog Thermometer** - Model# A660I-8LAN **\$6642.90 + Free Shipping***

This grill is amazing! Thicker Stainless Steel construction, Powerful H burners, Optional Infrared Burner built in the factory.

Commercial Quality



Known for crafting American-made premium grills for over 75 years, Fire Magic is dedicated to providing you with a luxurious outdoor cooking experience. The Aurora A660I built-in natural gas grill features 660 square inches of premium cooking space wrapped in a stylish, modern package that is built to last. It features 304 stainless steel construction for lasting quality, and sleek styling with a seamless control panel that comes with comfort touch control knobs and LED backlighting. The double walled, spring assisted hood opens 90 degrees for easier access and more efficient exhaust. It features an integrated analog thermometer with an angled bezel for easier viewing. Inside, this grill features two cast stainless steel E-burners, made with 1/4-inch thick walls and precision porting, and a left side infrared burner that combine for 75,000 BTUs. Reliable hot surface ignition always lights your burners where others might fail. Flash tubes serve as a backup. Flavor grids sit above the burners to spread heat evenly and protect the burners from debris and grease. These flavor grids have attached heat zone separators, allowing you to create independent heat zones at the surface of the grill for varied cooking options. The cooking surface consists of the patented Diamond Sear cooking grids. These grids feature a matte, non-stick surface, and a trapezoidal shape that efficiently transfers heat from the burner to the wide surface of the cooking grids. The warming rack above can be adjusted and moved out of the way when not in use. In the rear of the grill is an 18,000 BTU stainless steel infrared backburner for the included heavy-duty rotisserie kit. For night time grilling, the interior of the grill is lit by two halogen lights. A disposable drip tray system makes cleanup a breeze and reduces the chance of grease flareups. Solid, raised hangers line the sides and back of the grill for a seamless look when placed into a counter top or island. A 120 VAC power source is required for ignition, as well as for the lighting functions. With many of the same premium features as the Echelon series of grills, the Aurora series from Fire Magic is the perfect centerpiece for your luxury outdoor kitchen



Made in USA



304 Grade Stainless Steel



IN STOCK! SHIPS FAST!



**12-INCH SINGLE ACCESS DOOR
(REVERSIBLE)**

Reg Price \$169.99 **SALE \$144.99**

Model # BBQ-260-SH-12X12

CUTOUT: 12" W X 12"H

OVERALL DIMENSION: 14"W X 14"H



18-INCH SINGLE ACCESS DOOR-VERTICAL (REVERSIBLE)

Reg Price \$269.99 **SALE \$229.49**

Model# BBQ-260-SV-1420

CUTOUT: 14 3/8"W X 20 1/2"H

OVERALL DIMENSION: 16 3/8"W X 22 1/2"H



21-INCH SINGLE ACCESS DOOR-VERTICAL (REVERSIBLE)

Reg Price \$ 289.99 **SALE \$246.49**

Model# BBQ-260-SV-1724

CUTOUT:17 3/8"W X 24 1/2"H

OVERALL DIMENSION: 19 3/8"W X 26 1/2"H

24-INCH SINGLE ACCESS DOOR -HORIZONTAL- (REVERSIBLE)

Reg Price \$269.99 **SALE \$229.49**

Model# BBQ-260-SH2014

CUTOUT:20 1/2"W X 14 3/8"H

OVERALL DIMENSION: 22 1/2"W X 16 3/8"H

28-INCH SINGLE ACCESS DOOR-HORIZONTAL (REVERSIBLE)

Reg Price \$319.99 **SALE \$271.99**

Model# BBQ-260-SH2417

CUTOUT: 24 1/4"W X 17 1/4"H



25-INCH DOUBLE ACCESS DOORS

Reg Price \$349.99 **SALE \$297.49**

Model# BBQ-260-AD25

CUTOUT: 21 1/2"W X 18 3/8"H

OVERALL DIMENSION: 23 1/2"W X 20 3/8"H

32-INCH DOUBLE ACCESS DOORS

Reg Price \$369.99 **SALE \$314.49**

Model# BBQ-260-AD32

CUTOUT: 28 3/4"W X 18 3/8"H

OVERALL DIMENSION: 30 3/4"W X 20 3/8"H



32-INCH ACCESS DOOR & DOUBLE DRAWER COMBO (REVERSIBLE)

Reg Price \$ 719.99 **SALE \$611.99**

Model# BBQ-260-DDC

CUTOUT: 30 1/4"W X 19 1/4"H X 21"

OVERALL DIMENSION: 32 1/4"W X 21 1/4"H X 21"D

32-INCH DOUBLE DRAWER & TRASH/PROPANE ROLLOUT ON RIGHT COMBO

Reg Price \$1130. **SALE \$ 899.49**

Model# BBQ-260-DDC-TR-R

CUTOUT: 30 1/4"W X 19 1/4"H X 21"D

OVERALL DIMENSION: 32 1/4"W X 21 1/4"H X 21"

DRAWER INTERIOR: 12 1/4"W X 19 1/4"L X 7 1/2"H



39-INCH ACCESS DOOR & TRIPLE DRAWER COMBO(REVERSIBLE)

Reg Price \$789.99 **SALE \$699.49**

Model# BBQ-DDC-39

CUTOUT: 37 1/4"W X 19 1/4"H X 21"D

OVERALL DIMENSION: 39 1/4"W X 21 1/4"H X 21"



42-INCH DOOR, DOUBLE DRAWER & TRASH ROLLOUT ON RIGHT

Reg Price \$1299 **SALE \$1199.99**

Model# BBQ-260-DDC-42TR

CUTOUT: 40 3/8"W X 19 1/4"H X 21"D

OVERALL DIMENSION: 42 3/8"W X 21 1/4"H X 21"D



SINGLE DOOR/SINGLE DRAWER COMBO

Reg Price \$499.99 **SALE \$399.99**

Model# BBQ-260-SV24-DR1

CUTOUT: 19 1/2"W X 24 1/2"H X 21"D

OVERALL DIMENSION: 21 1/2"W X 26 1/2"H X 21"D

DRAWER INTERIOR: 17 3/4"W X 18 1/4"L X 2 3/4"H



30" DOUBLE ACCESS DOOR WITH 4" SINGLE DRAWER

Reg Price \$699.99 **SALE \$599.49**

Model# BBQ-260-AD30-DR1

CUTOUT: 28 3/8"W X 24 1/4"H X 21"D

OVERALL DIMENSION: 30 3/8"W X 26 3/8"H X 21"D



2-DRAWER DOUBLE ACCESS STORAGE

Reg Price \$569.99 **SALE \$484.99**

Model# BBQ-260-DRW2

CUTOUT: 15 3/8"W X 19 5/8"H X 21"D

OVERALL DIMENSION: 17 3/8"W X 21 5/8"H X 21"

DDRAWER INTERIOR: 15 5/8"W X 19 1/4"L X 7 1/2"H



3-DRAWER TRIPLE ACCESS STORAGE

Reg Price \$ 669.99 **SALE \$569.99**

Model# BBQ-260-DRW3

CUTOUT: 15 3/8"W X 27 5/8"H X 21"D

OVERALL DIMENSION: 17 3/8"W X 29 5/8"H X 21 "D



3-DRAWER STORAGE WITH TOP PAPER TOWEL HOLDER-

Reg Price \$699.99 **SALE \$569.99**

Model# BBQ-260-DRW3-PTH

CUTOUT: 15 3/8"W X 27 5/8"H X 21"D



30" X 15" SINGLE DEEP STORAGE DRAWER

Reg Price \$619.99 **SALE \$526.99**

Model# BBQ-260-DR3015

CUTOUT: 28 1/4"W X 13 1/4"H X 21"D

OVERALL DIMENSION: 30 1/4"W X 15 1/4"H X 21"D



SPICE RACK DRAWER

Reg Price \$469.99 **SALE \$399.49**

Model# BBQ-260-SPNW-DRW

CUTOUT: 6 1/2"W X 19 1/4"H X 16 1/2"D

OVERALL DIMENSION: 8 1/2"W X 21 1/4"H X 16 1/2"D



20-INCH 2 BIN TRASH/RECYCLE ROLLOUT

Reg Price \$639.99 **SALE PRICE \$543.99**

Model# BBQ-260-TREC-DRW

CUTOUT: 18"W X 24 1/4"H X 24"D

OVERALL DIMENSION : 20"W X 26 3/8"H X 24"D



20-INCH SINGLE TRASH/PROPANE ROLLOUT

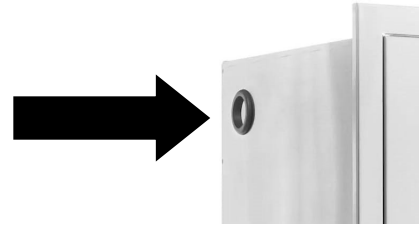
Reg Price \$479.99 **SALE \$407.99**

Model# BBQ-260-TRLP-DRW

CUTOUT: 18"W X 24 1/4"H X 16 3/8"D

OVERALL DIMENSION: 20"W X 26 3/8"H X 16 3/8"D

Hole for Propane Hose



13-INCH NARROW TRASH ROLLOUT

Reg Price \$479.99 **SALE \$407.99**

Model# BBQ-260-TRNW-DRW

CUTOUT: 12"W X 24 1/4"H X 19 1/2"D

OVERALL DIMENSION: 14"W X 26 3/8"H X 19 1/2"D

trash can included



32-INCH SEALED DRY STORAGE PANTRY WITH SHELF

Reg Price \$1379.99 **SALE \$1164.99**

Model# BBQ-260-DRY-STG

CUTOUT: 30 1/4"W X 19 1/4"H X 21"D

OVERALL DIMENSION: 32 1/4"W X 21 1/4"H X 21"H



PAPER TOWEL HOLDER

Reg Price \$269.99 **SALE \$220.99**

Model# BBQ-260-PTH

CUTOUT: 14 1/4"W X 8 5/8"H X 8 5/8"D

OVERALL DIMENSION: 16 1/4"W X 10 5/8"H X 8 5/8"D



18-INCH DROP-IN ICE BIN WITH CONDIMENT TRAY

Reg Price \$999.99 **SALE \$799.99**

Model # BBQ-260-18DI

CUTOUT: 18 1/4" W x 11 3/4" H x 19" D

25-INCH DROP-IN ICE BIN WITH CONDIMENT TRAY

Reg Price \$1199.99 **SALE \$1019.99**

Model# BBQ-260-DI

CUTOUT: 23 3/4"W X 23 3/4"D

OVERALL DIMENSION: 25 3/8"W X 11 3/4" H X 25 3/8"D



18-INCH SLIDE-IN ICE BIN WITH SPEED RAIL AND CONDIMENT TRAY

Reg Price \$1179.99 **SALE \$949.99**

Model# BBQ-260-18SI

CUTOUT: 18 1/4"W X 11 3/4"H X 18 1/4"D

OVERALL DIMENSION: 19"W X 11 3/4"H X 19"D

25-INCH SLIDE-IN ICE BIN WITH SPEED RAIL & CONDIMENT TRAY

Reg Price \$1299.99 **SALE \$1104.99**

Model# BBQ-260-SI

CUTOUT: 23 3/4"W X 11 3/4"H X 23 3/4"D

OVERALL DIMENSION: 25 3/8"W X 11 3/4"H X 25 3/8"D



#1 Outdoor Kitchen Sink



21-INCH OUTDOOR RATED DROP-IN BAR SINK

Model# BBQ-260-SINK-21

CUTOUT: 18 1/4"W X 21"D

OVERALL DIMENSION: 22"W X 16"H X 22 1/2"D

INCLUDES:

HOT/COLD FAUCET

CUTTING BOARD

STAINLESS COVER



Reg Price \$519.98



Frame Kits



*Orders Over \$400. within continental USA

*Conditions Apply-See Website

Module Frame Kits



4 ft Module Frame kit. Measures 4ft L x 31.5" D x 35" H

Bar Height 41" High also available

18 Gauge galvanized structural steel. 1"x1" square tubes

Rated Heavy Duty - Non Combustible - Approved for BBQ Islands

Supports Heavy Appliances Concrete & Granite Counters, Stone and Stucco



8 ft Non -Telescoping Module Frame kit.

Measures 8ft L x 31.5" D x 35" H

Bar Height 41" High also available

18 Gauge galvanized structural steel. 1"x1" square tubes



4- 8 ft Telescoping Module Frame kit.

Measures 4 to 8ft L x 31.5" D x 35" H

Bar Height 41" High also available

18 Gauge galvanized structural steel. 1"x1" square tubes

Get the perfect length without cutting!



No Cut Telescoping Grill/Fridge Module Frame kit.

Measures: custom length to fit your grill x 31.5" D x 35" H

With this module you do not need to make any cuts for the grill or a fridge opening.



3ft Drop Down Burner Module Frame kit.

Measures: 3 ft L x 31.5" D x 35" H

This module is perfect for your power burner. It is designed with a 12" drop down from the counter top.



Diagonal Corner Module

Great for a Sink, Pizza Oven Or Kamado in Large Outdoor Kitchens.

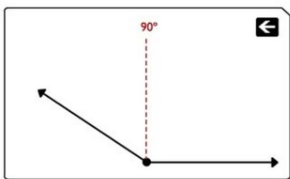
Measures: 45 3/4" x 45 3/4" on the 2 rear sides
31 1/2" one the 2 ends where straight modules will connect
35" Height / 41" Bar Height Available



90 Degree Corner Kit

Connects 2 modules together to make a 90 degree turn.

This is not a module. It is only 2 walls as shown to save money when creating L and U island designs with less parts. Modules are sold separate.



Custom Angle Kit

Connects 2 modules together at any angle needed.

Modules are sold separate.



Smoker Module Frame kit

Measures 32" L x 32" W x 17 1/4" H
Also available with a back wall kit.



Egg Smoker Platform for Diagonal Corner Module

This frame kit supports your smoker inside of our Diagonal Corner Module (sold Separate)

Appliance Cutout Kits

GRILL Cutout Kit	CO-GRILL
XL Grill Cutout Kit	CO-XLGRILL
XXL Grill Cutout Kit	CO-GRILLXXL
Grill cart Cutout Kit	CO-CART
Grill Platform Kit	CO-GP
Slide in Side Burner Kit (control knobs face forward)	CO-SB
Side burner platform kit	CO-SBP
Drop In Side Burner Kit (control knobs face sky)	CO-DSB
Power burner no drop kit	CO-PB
Single door kit	CO-SD
Horizontal & Double door kit	CO-DD
Xl double door kit	CO-DDXL
Vertical drawer kit	CO-VDRW
Xl drawer kit	CO-XLDRW
Trash/propane drawer kit	CO-TR/PRO
Combo kit	CO-COMBO
Triple combo kit	CO-TCombo

Every Appliance and component you plan to put into your module requires extra framing called a cutout kit to support it. For example: a grill requires a grill cutout kit, a door needs a door cutout kit... Our kits are pre cut for the depth parts to fit our modules. The width parts of the cutout kits are made with our **telescoping parts** for no cutting.

Extra Vertical tubes for cutout kits and cement board seams are sold separate.

Bar center kit –Large	CO-BARL
Bar Center—Small	C)-BARSM
Drop in ice bin kit	CO-DIB
Fridge/ice maker kit	CO-F
Keg kit	CO-KEG
Small sink kit	CO-SinkSM
Medium sink kit	CO-SinkM
Large sink kit	CO-SinkL



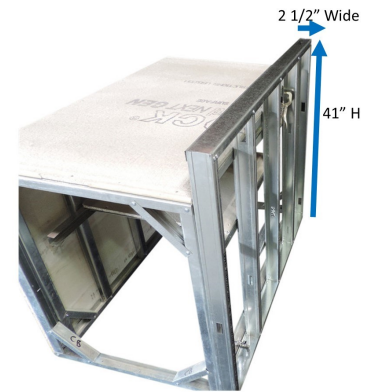
Every Components Will Need the Matching Cutout Kit to support it in the module

Upgrade Kits



Welded Split Bar Counter Frame

4 ft Welded Split Bar Counter . Available in 4ft and 2 ft lengths. Makes it super easy to add a raised bar counter for bar stools to your outdoor kitchen.



4ft of Back Splash Kit

4ft of Back Splash kit. We use 20 gauge 2 1/2 wide steel studs and tracks to create a back splash frame. The size is perfect for electrical boxes and looks great.



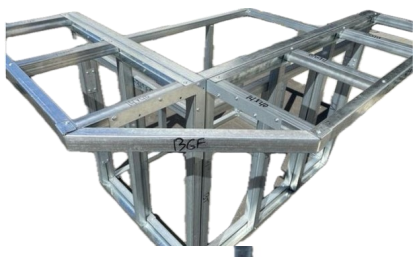
4ft of 4" Level Over Hang Kit

4ft of 4" Over Hang Kit. This is needed for a tile counter top with stone veneer siding. It protects your stone from water. Not needed with granite or concrete slabs.



4 ft of 12" Level Overhang Kit

4 ft of 12" Level Overhang. Required for tile counter tops. For granite slab or concrete this is optional. Some people like it for the added protection for their granite. Supports sold Separate



Wrap Around Split Bar Kit

Our Wrap Round Split Bar Kit provides the split bar frame for the end of a module. It also includes a pre cut diagonal part to connect to the split bar on the rear of the module (sold separate).

Needed Extra's



Hex Head Screws



Cement Board Screws



Cement Board Screw Bit



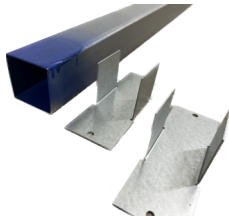
CP Connector Plate



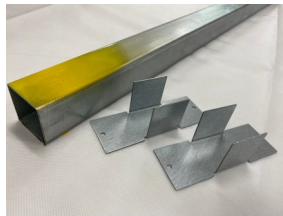
Composite Shims



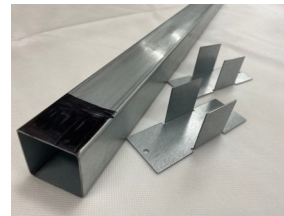
4ft x 25mm x25mm



CTT/EF w/ 1 ways



Vertical Tube w/1 ways



Bar Height w/1 ways



4ft x 1.5" Catcher Track



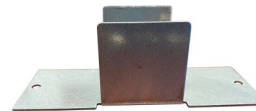
4 Way Flat



4 Way Corner



3 Way Corner



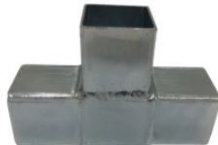
1 Way Machine Made



1 Sided 1 Way



Welded 1 Way



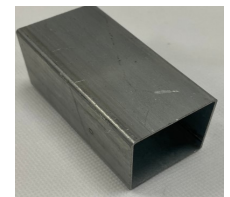
3 Way Flat



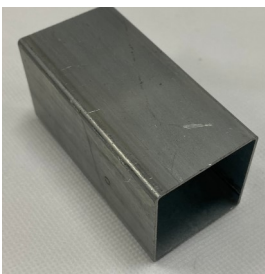
90 Degree



45 Degree



Adaptor



Union



Electrical Box



Leveling Feet



Cement Board Stucco



Stainless Steel Air Vents



Below the Grill Telescoping Tubes

DIY Outdoor Kitchen System has created an easy and affordable way to build your own outdoor kitchen. We have helped over 50,000 families and contractors in the past 20 years.

Our system allowing anyone to build a real steel frame without welding is Amazing! Our steel couplers make building an outdoor kitchen frame as easy as lego's. Our real steel tubes are much stronger than track & stud systems.